



GSF3/B

B - Black glass  
 EAN 8595188192453  
 Order code 9245



GSF3/W

W - White glass  
 EAN 8595188192460  
 Order code 9246

### Example



B - Black glass



W - White glass



B - Black glass



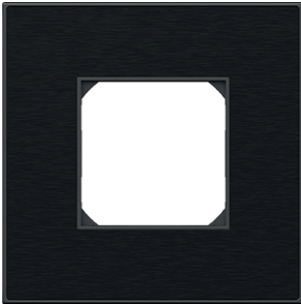
W - White glass



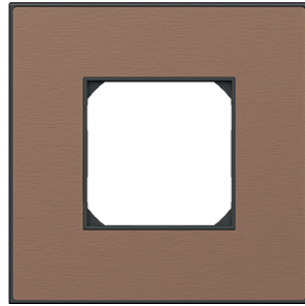
Glass switch buttons  
 with symbols

AC power multistandard  
 socket PMS

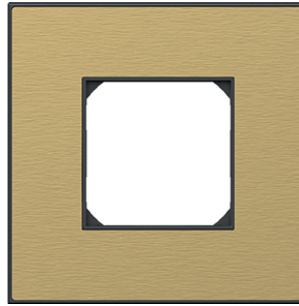
USB-A+C sockets & LAN RJ45



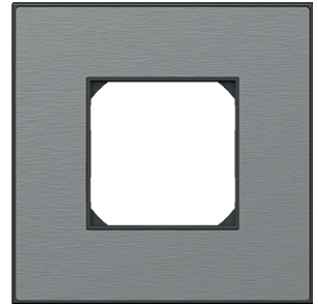
**MSF3/B**  
**B - Graphite black**  
 EAN 8595188192446  
 Order code 9244



**MSF3/C**  
**C - Antique copper**  
 EAN 8595188192439  
 Order code 9243



**MSF3/G**  
**G - Satin brass**  
 EAN 8595188192422  
 Order code 9242



**MSF3/S**  
**S - Brushed silver**  
 EAN 8595188192415  
 Order code 9241

### Example



B - Graphite black



C - Antique copper



G - Satin brass



S - Brushed silver



B - Graphite black



C - Antique copper



G - Satin brass



S - Brushed silver

## TEM socket



- SOCKET MULTI-STANDARD+ KS 2P+E 13A 250V~ 2M**  
 - plug-in contacts 1.5–2.5 mm<sup>2</sup>  
 - shuttered live contacts

## Order code

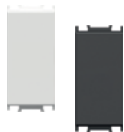
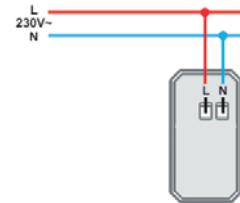
## EAN

- VM55MW-U 3831006999763  
 VM55PW-U 3831006992016  
 VM55SB-U 3831006992030



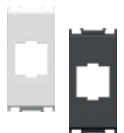
- USB POWER SUPPLY UNIT 5V 3,0A**  
 - power supply: 100-230V ~ 50/60Hz  
 - power consumption: 300mA at 100V~/150mA at 230V ~  
 - standby power consumption: 30mW at 230V~  
 - nominal output voltage: 5 — (±5%) SELV  
 - output ripple voltage: 150mV  
 - nominal output current:  
 - EM68 , EQ68, EE68: 3,0 A (±10 %) ; (Type USB A / USB C)  
 - efficiency: maximum of 77%  
 - operating temperature: 0°C/+45°C (indoor use)  
 - IP protection class: IP20, indoor use only  
 - class device II  
 - overvoltage category (IEC 60364-4-44) CAT II  
 a low-voltage SPD (surge protective devices) in accordance  
 with the EN 61643-11 intended  
 to reduce the overvoltage category III to II must be installed  
 upstream of the USB device  
 - screw contacts: max. 2.5 mm<sup>2</sup>  
 - device with a contact gap of at least 3mm

- EM68MW-U 3831006993549  
 EM68PW-U 3831006991248  
 EM68SB-U 3831006991262



- BLANK 1M**  
 - blank modul to fill up empty spaces  
 - in accordance with EN 60669-1  
 - 2 pcs in a pack

- TM21MW-U 3831006995321  
 TM21PW-U 3831006933170  
 TM21SB-U 3831006933200



- ADAPTER KS UNIVERSAL 1M**  
 - KS keystone fixing standard  
 - suitable for HDMI, USB  
 - communication module not included

- KM50MW-U 3831006993754  
 KM50PW-U 3831006949454  
 KM50SB-U 3831006949546



- SOCKET CAT6 SCH KS RJ45 8/8 1M**  
 - KS keystone fixing standard  
 - CAT6 UTP toolless, RJ45 8/8  
 - in accordance with ISO/IEC 11801

- KM39MW-U 3831006993754  
 KM39PW-U 3831006949454  
 KM39SB-U 3831006949546



- CONNECTOR KS HDMI**  
 - KS keystone fixing standard  
 - only in combination with adapter KM50  
 - HDMI/HDMI

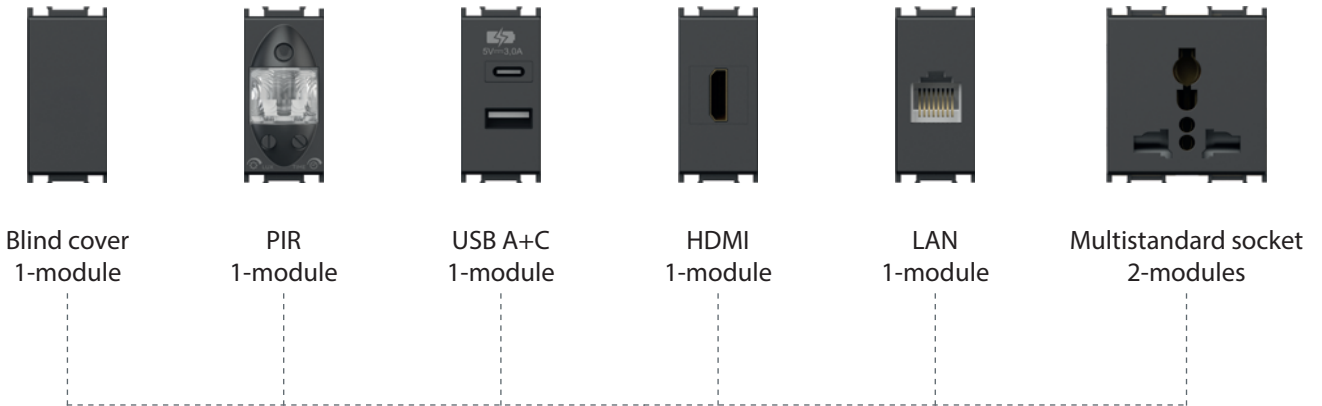
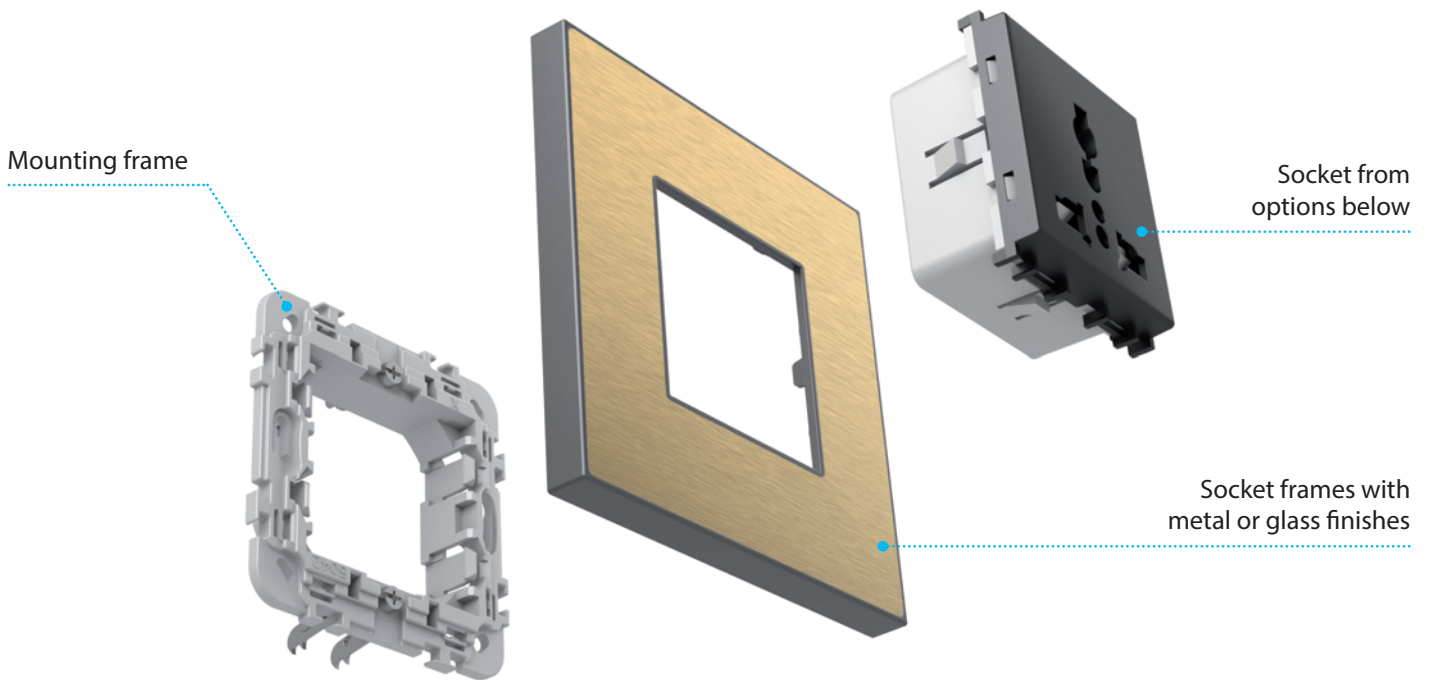
- KA27-U 3831006949430



- MOUNTING FRAME WITHOUT SCREWS 2M**  
 - mounting frame 2M without screws and without claws  
 - for mounting on boxes Ø60 (HE., BE.) with screws  
 - possible horizontal or vertical combinations 2x2M, 3x2M  
 and 4x2M  
 - suitable for assembling with cover plates LINE, SOFT, PURE  
 and EDGE  
 - in accordance with EN 60669-1

- NM21-U 3831006909939

- MW matte white  
 PW polar white  
 SB soft touch black



USB-A+C sockets & LAN RJ45

AC power multistandard socket PMS

Metal switch buttons with indicators